

SERIE | SERIES | SÉRIE 41



Serie Series Série	Nennweite Diameter Diamètre
41	050. (DN 50, 2")
	065. (DN 65, 2½")
	080. (DN 80, 3")
	100. (DN 100, 4")
	125. (DN 125, 5")
	150. (DN 150, 6")

Manschette Qualität Sleeve Quality Manchon Qualité								Version
NR	NR-L	NR-LH	NBR-LH	EPDM-L	FPM	CR	CSM	Standard
001.	011.	021.	121.	201.	301.	401.	501.	000
ATEX-versions:								ATEX
								022

L - FDA-konform - in compliance with FDA - conforme à FDA H - hell (weiss) - pale (white) - clair (blanc) E - ATEX-konform - in compliance with ATEX - conforme à ATEX

Manschette | sleeve | manchon

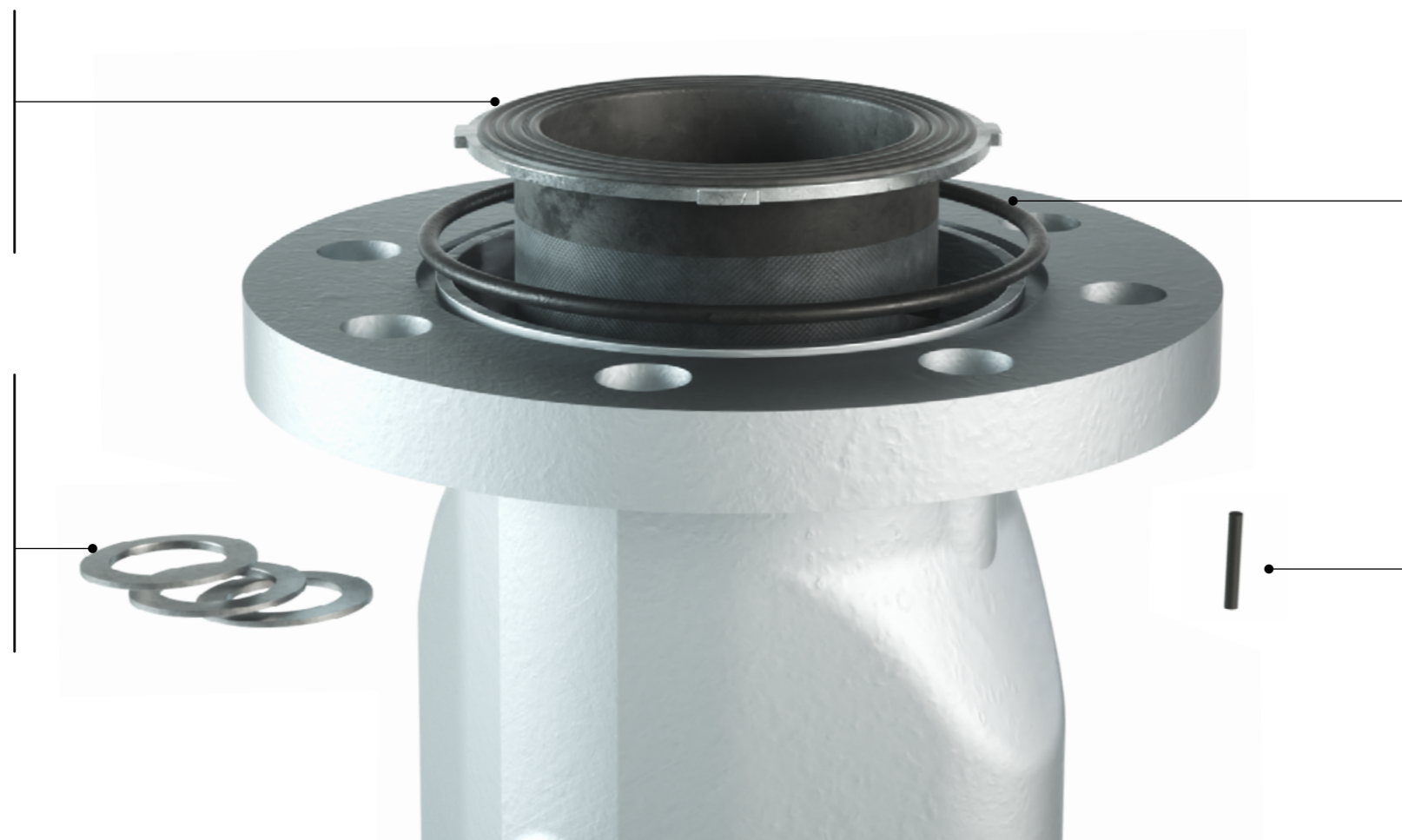
nach Wahl (siehe Tabelle oben)
as selected (see table above)
au choix (voir tableau ci-dessus)

example: 40xx.xxx.x00

Dichtscheibe | sealing disc | disque d'étanchéité

mit Dichtung - with joint - avec joint Klinger

- art.no. 4050.11 1.5 mm + 1 mm
- art.no. 4065.11 1.5 mm + 1 mm
- art.no. 4080.11 1.5 mm + 1 mm
- art.no. 4100.11 2.0 mm + 1 mm
- art.no. 4125.11 2.0 mm + 1 mm
- art.no. 4150.11 2.0 mm + 1 mm



O-Ring | o-ring | joint torique

NBR / 2x

- art.no. 4050.06 84 x 4 mm
- art.no. 4065.06 102 x 4 mm
- art.no. 4080.06 122 x 4 mm
- art.no. 4100.06 144 x 4 mm
- art.no. 4125.06 175 x 4 mm
- art.no. 4150.06 200 x 4 mm

Sicherungsstift | locking pin | cheville d'arrêt

- art.no. 4050.08 2.5 x 20
- art.no. 4065.08 2.5 x 20
- art.no. 4080.08 2.5 x 20
- art.no. 4100.08 2.5 x 20
- art.no. 4125.08 3.0 x 22
- art.no. 4150.08 3.0 x 22